

BUILDIAMON™
Build the Diamond Quality



CATALOGUE

- ▶ Fiberglass Fabrics
- ▶ Welding Blanket
- ▶ Fiberglass Composites
- ▶ Fiberglass Mesh & Tape



Hebei Blue Diamond International Co., Ltd

ADD: THE 6TH FLOOR, ANTAI BUILDING, WEIMIN WEST STREET,

ANPING, HENGSHUI, HEBEI, 053600, CHINA

Tel: 0086-189-31632298

Fax: 0086-318-7887843

Email: sales@buildiamon.com

<http://www.buildiamon.com>



High Temperature Fabrics & Composites

OUR FACTORY AND EQUIPMENTS:



Weaving Workshop



Fiberglass Coating Machines



Coating Fabrics Machines



Coating Aluminum Machines



High Temperature Fabrics & Composites

ABOUT US >>

Blue Diamond is a professional fiberglass materials manufacturer and exporter in China, which is specialized in high temperature insulation materials and composites for many years.

Blue Diamond has its own brand **"BLUETEX"**, and we try to offer the quality fiberglass materials with moderate prices for our customers domestic and abroad.

Our products mainly include two big categories:

One is High temperature fiberglass fabrics and composites, mainly used in Automotive, Marine, Aerospace, Petrochemical and Construction, Removable insulation blanket and curtains, Flexible industrial ducting, Lagging, Safety clothing and so on.

The other is high quality fiberglass mesh products, mainly used in ETICS & EIFS, External and Internal plaster reinforcement, Electrical heating mats, Marble Slab Reinforcement & Mosaic Carrier, Asphalt reinforcement (Waterproof for roofing), Reinforced lightweight construction boards and so on.

We operate with the latest technology manufacturing lines, Dornier weaving machines, sophisticated coating machines, R&D studies in its laboratory with skilled staff.

Blue Diamond operates according to ISO9001-2008 Quality Management Standard. And we can arrange production according to the testing standard ETAG 004, which can meet the requirements from European and USA markets.

Blue Diamond keep its leader position in the market without concession from customer's satisfaction with "Build the Diamond Quality" motto.

PRODUCTS



Fiberglass Cloth	04
Welding Blankets/Curtains	05
Silicone Coated Fiberglass Cloth	06
Vermiculite Coated Fiberglass Cloth	07
Aluminum Foil Treated Fiberglass Cloth	08
Silica Cloth	09
Teflon Coated Fiberglass Cloth	10
Teflon (PTFE) Glass Fiber Open Mesh	11
PTFE Fiberglass Cloth Tape	11
Acrylic Acid Coated Fiberglass Cloth	12
PU Coated Fiberglass Cloth	13
PVC Coated Fiberglass Cloth	14
Neoprene Coated Fiberglass Cloth	15
Graphite Coated Fiberglass Cloth	16
Aluminum Foil Tape With Fiberglass	16
Fiberglass Insulating Sleeve	17
Alkali Resistant Fiberglass Mesh	18
Self-Adhesive Fiberglass Mesh Tape	19
Fiberglass Insect Screen	20
Paper Drywall Joint Tape	21
Metal Corner Tape	22
Fiberglass Woven Roving	23
Fiberglass Chopped Strand Mat	24
PVC Corner Bead with Fiberglass Mesh	25
Fiberglass Tissue Tape	25
Fiberglass Wallcovering	26
PE Tarpaulin	26



Fiberglass Cloth

Bluetex fiberglass cloth is woven from continuous E-glass fiberglass yarns, which has good chemical and fire resistant.

Typical Applications:

- ★ Welding blanket and curtains
- ★ Expansion joints
- ★ High temperature insulation
- ★ Heat shield and containment



Technical Data Sheet of Glass Fiber Cloth

Item No.	Weave	Warp Yarn Specification	Weft Yarn Specification	Thread Count (mesh/cm)	Weight (g/m ²)	Thickness (mm)
121	Plain	EC9 68 1x3	EC9 68 1x3	8x8	320	0.45
122	Plain	EC9 34 1x3	EC9 34 1x3	9x8	180	0.25
125	Plain	EC9 68 1x3	EC9 68 1x3	7x6	280	0.45
1581	Satin	EC9 33 1x2	EC9 33 1x2	22.4x21.2	300	0.229
7628	Plain	EC9 33 1x2	EC9 33 1x2	18x12	210	0.2
3732	Twill	EC9 33 2x2	EC9 33 2x2	19x13	430	0.4
3734	Twill	EC9 33 4x2	EC9 33 4x2	14x9	625	0.6
3784	Satin	EC9 33 4x2	EC9 33 4x2	19x13	880	0.64
3786	Satin	EC9 33 4x4	EC9 33 4x2	18x12	1300	1.2
3788	Satin	EC9 33 4x4	EC9 33 4x4	18x11.5	1600	1.6
FW600DP	Plain	EC9 33 3x2	EC9 33 3x2	14.6x14.6	600	0.55
2025	Plain	EC9 430 Tex	EC9 430 Tex	8x5.7	610	0.8



Welding Blankets/Curtains >>

Bluetex welding blankets are woven from textured or non-textured fiberglass yarns. Its main characteristics are: noncombustible, resisting high temperature, tight frame, non thrill, soft texture and with tenacity, and it is convenient for tying up goods or equipment with unsmooth surface. Welding blankets can well protect goods to keep away from fire to drastically insulate burning.

Application:

Welding blankets are suitable to be used in the occasion with flame and easy to get on fire, which can keep out flame splashing, dissolve dregs, welding splashing solid to insulate fire danger which happen in the working place or jointing place; meanwhile, it could help to establish a safe, clean and criterion working environment. It can be widely used in shipping industry for ship-frame structure and repair, and also in petrol-chemical industry for heatproof and insulation of metal structure or welding.



★General Categories:

Fiberglass cloth, texturized fiberglass cloth

★Coating Categories:

Silicone coated fiberglass cloth, vermiculite coated fiberglass cloth, neoprene coated fiberglass cloth, dyed fiberglass cloth, aluminized fiberglass cloth

★High temperature categories: High silica Fiberglass cloth

★Standard Blankets Size: 3' x 3', 6' x 6', 6' x 8', 8' x 8', 10'x10' and so on.

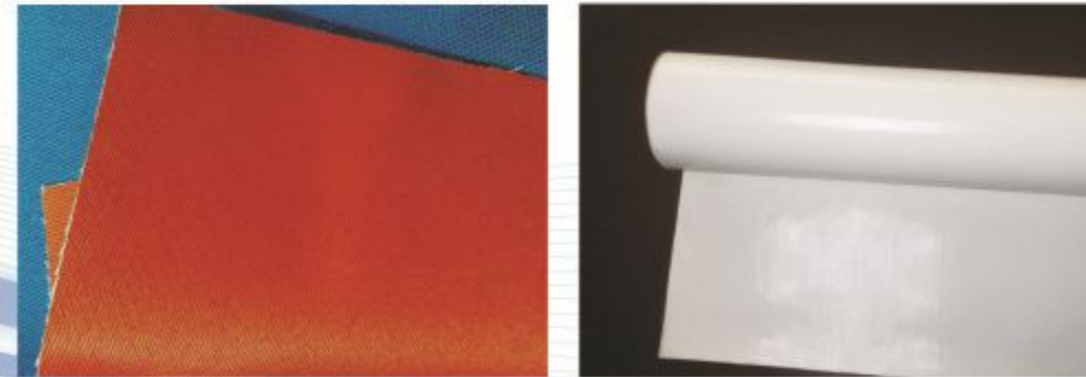


Silicone Coated Fiberglass Cloth >>

Bluetex Silicone coated fiberglass cloth is a fiberglass base fabric which has been coated or impregnated with our specially formulated silicone rubber compound. It provides greater abrasion puncture and tear resistance to our base fiberglass cloth. It provides great life, water and oil resistance.

Typical Applications:

- ★Welding blanket and curtains
- ★Expansion joints & Fabric ductwork connector
- ★High temperature insulation
- ★Heat shield and containment
- ★Removable insulation cover
- ★Insulation jackets, mattress and pad
- ★Fire doors & Fire curtains



Fiberglass Cloth Properties:

1	Base cloth content	100% E-glass Fiberglass Yarn	
2	Fabric Finish	Satin, grey/red silicone coated / impregnated	
3	Base cloth weight	17oz/yd ² + 10% ~ 32oz/yd ² + 10%	
4	Thickness	0.016" + 10% ~ 0.035" + 10%	
5	Base cloth temperature resistance	1000°F	540°C
6	Coating	500°F	260°C
7	Width	40",48",60",72"	101.6,121.9,152.4,182.8cm



Vermiculite Coated Fiberglass Cloth >>

Bluetex fiberglass cloth is woven from continuous texturized E-glass fiberglass yarns, which has good chemical and fire resistant.

Vermiculite coating can improve abrasion resistance, which acts as armor to the fiberglass, providing better resistance to direct flame. Heat travels across the fabric – not through it.

Typical Applications:

- ★ Welding blanket and curtains
- ★ Expansion joints
- ★ High temperature insulation
- ★ Heat shield and containment
- ★ Gaskets, oven door seals
- ★ Removable insulation cover
- ★ Safety clothing



Fiberglass Cloth Properties:

1	Content	100% E-glass Fiberglass Yarn	
2	Fabric Finish	Plain, Vermiculite coated, Brown color	
3	Weight	18 oz/yd ² , 24 oz/yd ² , 35 oz/yd ²	
4	Thickness	0.030" ~	
5	Temperature Resistance	1000°F	540°C
6	Remains Stable to	1500°F	815°C
7	Width	40", 48", 60", 72"	101.6, 121.9, 152.4, 182.8cm

★ Can be dyed in different colors



Aluminum Foil Treated Fiberglass Cloth >>

Bluetex fiberglass cloth is woven from continuous texturized or non-texturized E-glass fiberglass yarns, which has good chemical and fire resistant.

Aluminum foil is laminated on one side of the fabric.

Typical Applications:

- ★ Welding blanket and curtains
- ★ Expansion joints
- ★ High temperature insulation
- ★ Heat shield and containment
- ★ Removable insulation cover



Fiberglass Cloth Properties:

1	Content	100% E-glass Fiberglass Yarn	
2	Fabric Finish	Plain, Laminated aluminum foil	
3	Base cloth weight	18 oz/yd ²	
4	Finished fabric weight	21 oz/yd ²	
5	Thickness	0.035"	
6	Temperature Resistance	1000°F	540°C
7	Aluminum Foil	120°F	648°C
8	Adhesive	300°F	148°C
9	Width	40", 48", 60", 72"	101.6, 121.9, 152.4, 182.8cm



Silica Cloth >>

Bluetex silica cloth has more than 96% silica with excellent break strength and improved abrasion resistance. High silica cloth has been specially developed to use in the applications to protect against extreme temperature environment. Silica cloth has excellent thermal insulation characteristics over a very wide temperature range and doesn't melt until temperature exceeds 3000°F. They also have excellent chemical resistance and electrical insulation properties.

Typical Applications:

- ★ Welding blanket and curtains
- ★ Heat and Flame Shielding
- ★ Stress relief
- ★ Gasket, Seal
- ★ Hose and Cable Protection
- ★ Protective Garments



Fiberglass Cloth Properties:			
1	Content	96% minimum silica content	
2	Fabric Finish	Harness Satin	
3	Color	Caramel	
4	Weight	18 oz/yd ² 36 oz/yd ²	
5	Thickness	0.030", 0.055"	
6	Temperature Resistance	1800°F	982°C
7	Melt Temperature	3000°F	1648°C
8	Width	36"	91.4cm



Teflon Coated Fiberglass Cloth >>

Bluetex Teflon coated fiberglass consist of satin weave fiberglass cloth, which has been coated with PTFE. It has excellent chemical resistance and temperature exposure capabilities. It is mainly used in petrochemical and aluminum industries.

Typical Applications:

- ★ Removable covers and blankets
- ★ Pipe insulation
- ★ High temperature insulation
- ★ Aluminum industries
- ★ Removable insulation
- ★ Petrochemical industries

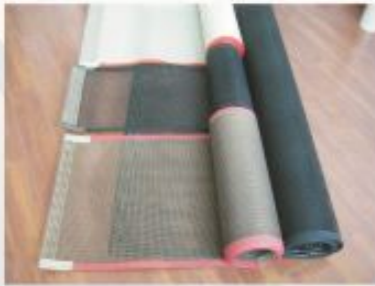


Fiberglass Cloth Properties:			
1	Base cloth content/Weave	Fiberglass/Satin	
2	Fabric Finish	PTFE coated	
3	Color	Grey color	
4	Weight	17 oz/yd ²	
5	Thickness	0.017"	
6	Temperature Resistance	-67°F -500°F	-55°C -260°C
7	Width	60"	152.4cm

★ Can be finished in different colors.



Teflon (PTFE) Glass Fiber Open Mesh >>



Main Specification:

Thickness: 0.2–1.35mm

Width: 100mm–4200mm

Mesh: 0.5x1mm, 1x1mm, 2x2mm, 4x4mm, 10x10mm

Latitude: double latitude, single weft

Color: brown, black

Application:

1. Conveyer belt for hot air dryer, various of food baking, quick-frozen machines.
2. Drying machine for non-woven textile, textile printing.
3. Shrinking machine for garment fabric, high frequency and UV dryer.

PTFE Fiberglass Cloth Tape >>

PTFE Fiberglass Cloth Tape is a fiberglass fabric impregnated with PTFE dispersion and coated with high-temperature, pressure-sensitive acrylic adhesive. It is very durable and versatile product. The combination of PTFE, fiberglass and high temperature acrylic adhesive allows Teflon adhesive tape to perform in continuous temperatures up to 500F. It is dimensionally stable and resistant to tears, punctures, abrasion and wear. It will not cold flow under heavy loads.



Application:

- A: As coatings of high-temperature roller, heating plate, demoulding unit.
- B: Heat-sealing materials for food, medicines and plastic bag.
- C: As gaskets of trough, hopper, aviation molds.
- D: Other fields in which surface treatment is needed to reach anti-stick, anti-corrosion and high temperature resistance properties.
- E: For packaging, thermoplastic, composites, heat sealing, electrical and electronic industries.



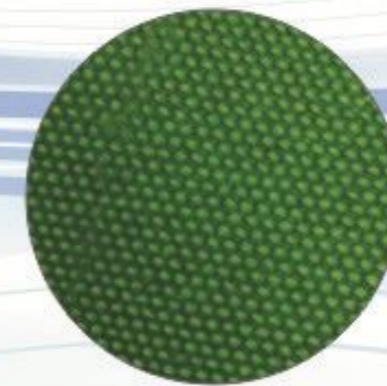
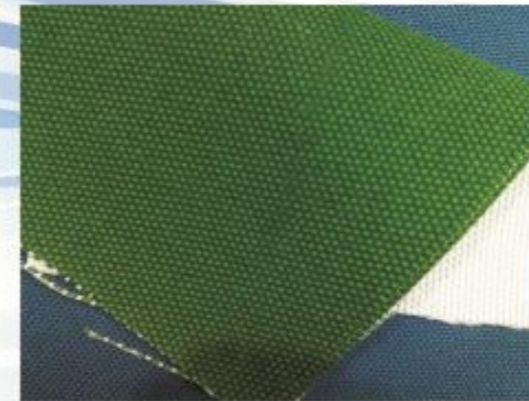
Acrylic Acid Coated Fiberglass Cloth >>

Bluetex Acrylic coated fiberglass cloth uses high temperature resistant fiberglass cloth as basic fabric, then coated with acrylic.

Applications:

1. used in fire blankets, fire curtains and smoke curtains
2. welded blankets, curtains and etc
3. heat preservation and used in the production of heat insulation glove
4. equipment protection of high temperature and corrosion

Fiberglass Cloth Properties		
1	Total weight	610g/m ²
2	Thickness	0.60mm
3	Coating	Acrylic coating on both sides
4	Fire resistance	Class A certificated (ASTM E84-12)
5	Color	Green
6	Working Temperature	550
7	Standard width	1000mm, 1300mm, 1550mm





PU Coated Fiberglass Cloth >>

Bluetex polyurethane polymer coated fiberglass cloth can withstand temperature up to 1800°C for short bursts. It has very good abrasion resistance and good resistance to oils and solvents.

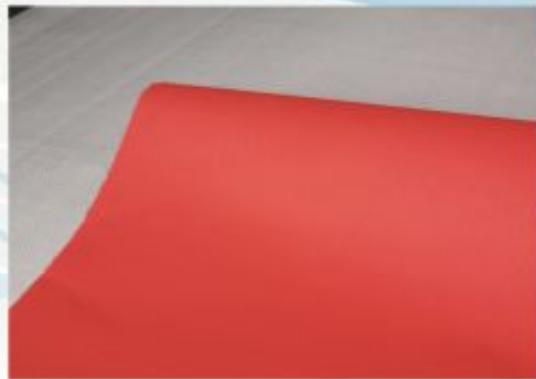
Bluetex can provide one-sided and double-sided polyurethane coated fiberglass cloth with many colors and widths.

Applications:

Can be used for water proof materials, pvc fabric, fire proofing canvas. engineering, heat insulation, sound absorption, fire prevention and environmental protection underground projects, bridges, drainage channels, reservoir and disposal of sewage and etc, also applied to motor, chemical plant, equipment of power plant and so on.

Fiberglass Cloth Properties

Item No.	Weight (g/m ²)	Overall Thickness (mm)	Coating sides	Basic cloth	Width (m)
1	440	0.45	1	3732	1.0, 1.2, 1.5
2	450	0.45	1	3732	1.0, 1.2, 1.5
3	460	0.45	2	3732	1.0, 1.2, 1.5
4	680	0.66	1	666	1.0, 1.5
5	710	0.66	2	666	1.0, 1.5
6	780	0.75	2	2025	1.0, 1.5
7	920	1.00	2	M24	1.0, 1.5
8	1080	1.50	1	M30	1.0, 1.5
9	1130	1.50	2	M30	1.0, 1.5



PVC Coated Fiberglass Cloth >>

Product introduction:

PVC Coated Fiberglass cloth is made with the basal material of high temperature resistant fiberglass fabric and PVC by follow-processing; it is a compound material with high quality of performance.

Applications:

It has been widely used in welder tarpoline, shed fabric, wind-booting tube, fire blanket used on water-proofing, fire-proofing, cold-proofing and so on.

Fiberglass Cloth Properties

1	Weight	200g/m ² - 2800g/m ²
2	Weave type	Plain weave, twill weave, satin weave
3	Color	Red, white, yellow, black, grey and so on
4	Width	1000mm - 2200mm





Neoprene Coated Fiberglass Cloth >>

Bluetex Neoprene coated fiberglass cloth uses high temperature resistant fiberglass cloth as basic fabric, then coated with neoprene.

Applications:

widely used to make oil resistant sealing component and it is always used as lay material on workbench and floor which in oil environment. In electronic or aging locale used as oil resistant material.

Technical data:

Thickness: 0.1-1.5mm

Width: 100cm,120cm,150mm,etc

Color: black, yellow, green, blue and etc.

Coating ways: single-side , double-side coated.

Weight: 130g/m2-1700g/m2

Main Characteristics:

- ★ Good machinery tensile strength
- ★ Resist ozone and aging
- ★ Fireproof and flame resistant
- ★ Resist chemical erode
- ★ Good capability of oil resistant
- ★ Can be stick on many basic materials



Graphite Coated Fiberglass Cloth >>



Graphite coated fiberglass cloth provides short temperature resistance of 1000°C . This coating also increases resistance to abrasion and flame, high temperature absorb mote.

Application:

It's the ideal fabrics used for welding blanket, fire protecting curtain, and general insulation wrapping.

Aluminum Foil Tape With Fiberglass >>

specification

Excellent water vapor barrier properties, high mechanical strength and oxidation resistance, strong cohesion, corrosion resistance, weak acid.

Application

Suitable for pipe sealing stitching, HVAC ducts, heating pipes insulation and vapor barrier, particularly shipbuilding industry pipe sealing.



production type	thickness	adhesive	tack	peel strength	temperature
FGT-01	0.007-0.014	Solvent-based acrylic adhesive	≤200	≥12	+10-+40
FGT-01R	0.007-0.014	Solvent-based acrylic adhesive flame retardant	≤200	≥12	+10-+40
FGT-01R	0.007-0.014	Solvent-based acrylic adhesive low temperature flame	≤50	≥12	+10-+40
HT-FG-01	0.007-0.014	Synthetic rubber adhesive	≤200	≥15	+10-+40



Fiberglass Insulating Sleeve >>

PVC fiberglass sleeve is fiberglass sleeve coated with PVC resin, with very good flexibility and dielectric features, it is widely used as insulating and protection material for motor and electric appliance.

Specifications:

- Diameter: 0.5mm-40mm
- Breakdown voltage: 1.5KV,2.5KV,4KV,7KV
- Temperature range: -25 °C ~ 130°C
- Color: blue line, red line, green line and so on.



Silicone fiberglass sleeve is twisted with non-alkali fiberglass yarn and coated with special silicone resin under high temperature, with good dielectric, self-extinguish, which is widely used for class H electrical machinery, electrical appliance, heating equipments etc.

Specifications:

- Diameter: 0.5mm-30mm
- Breakdown voltage: 1.5KV,2.5KV,4KV,7KV
- Temperature range: -60 °C ~ 250°C
- Color: white, red, black, yellow and so on.

Silicone rubber fiberglass sleeve is made of high quality silicone rubber with scientific prescription processing and advanced technology.

Specifications:

- Diameter: 1mm-30mm
- Breakdown voltage: 1.5KV,2.5KV, 4KV, 7KV
- Temperature range: -70 °C ~ 260°C
- Color: natural, white, red, black, yellow and so on.

Acrylic fiberglass sleeve is made of non-alkali fiberglass with acrylic resin coating, it has reliable heat resistance, widely used as wiring insulation for motors, electrical appliance and so on.

Specifications:

- Diameter: 0.5mm-30mm
- Breakdown voltage: 1.5KV,2.5KV,4KV,7KV
- Temperature range: -20 °C ~ 105°C
- Color: natural, white, red, black, yellow and so on.

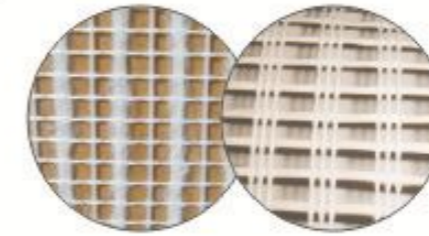


Alkali Resistant Fiberglass Mesh >>

Bluetex Fiberglass Mesh can provide the system with enough capacity to contain the movements, caused by thermal excursions or shrinkage, or the insulating material over time, preventing the formation of hairline cracks on the facade.

ADVANTAGES:

- ★ High alkali resistance and ETAG004 certificated products
- ★ Factory price
- ★ Steady quality
- ★ Quick delivery and professional service
- ★ Width and Length can be customized
- ★ We can do OEM

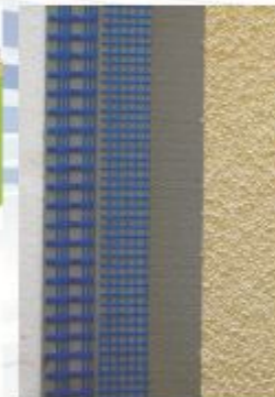
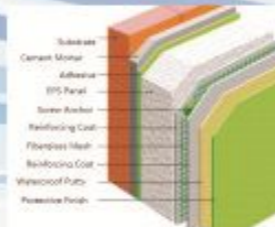


Specification:

- 1.Weight: 45g/m² ~ 350g/m²
- 2.Mesh Size: 2.5x2.5mm, 3x3mm, 4x4mm, 4x5mm, 5x5mm, 10x10mm
- 3.Width: 200mm ~ 2000mm
- 4.Roll Length: 10m ~ 300m
- 5.Color: white, blue, yellow, green, red and so on

Application:

- 1.ETICS & EIFS
- 2.External and Internal plaster reinforcement
- 3.Electrical heating mats
- 4.Marble Slab Reinforcement & Mosaic Carrier
- 5.Asphalt reinforcement (Waterproof for roofing)
- 6.Reinforced lightweight construction boards





Self-Adhesive Fiberglass Mesh Tape >>

Self-adhesive Fiberglass mesh tape is widely used in covering drywall joints, cracks, and holes on drywalls, plasterboard, stucco and other surface.

Specifications:

Product Code	Yarn Tex (Tex)		Density (Counts/25mm)		Treated Woven Mass G/m2	Resin Content (%)	Tensile Strength N/5cm x 20cm	
	Warp	Weft	Warp	Weft			Warp	Weft
CNT80-9x9	12.5 x 1 x 2	99	9 ± 0.5	9 ± 0.5	80	≥ 28	≥ 550	≥ 650
CNT70-9x9	22 x 1 x 2	45	9 ± 0.5	9 ± 0.5	70	≥ 28	≥ 550	≥ 600
CNT60-9x9	22 x 1 x 2	45	9 ± 0.5	9 ± 0.5	60	≥ 28	≥ 550	≥ 500
CNT50-8x8	33 x 1 x 2	66	8 ± 0.5	8 ± 0.5	50	≥ 28	≥ 350	≥ 450

Color: white, yellow, blue etc.
Based on order, special specifications are also available.

Application:

Used on drywall and cement boards, cover drywall joints, cracks, and holes, repair wall and ceiling crack, cover seams in the process of drywall construction, also be used to wall and ceiling problems, seal corners where two sections of drywall meet.

Packing:

Width (mm): 25, 35, 40, 42, 46, 50, 100, 150, 200, 1000.

Length (m): 10, 20, 45, 90, 153, 300

Each roll is shrinkage and label or poly bag.

Quantity: 24rolls/carton



Fiberglass Insect Screen >>

Bluetex fiberglass insect screen is the mesh applied in most window and doors. Easily fabricated, this high-quality standard mesh is the preferred insect screening in the fenestration industry.

Specifications:

Mesh: 18 x 16 nominal mesh count
Colors: Charcoal and Silver-Gray
Roll Length: 100' & 600'
Widths: 18" -96"
Yarn Diameter (inch) .010 - .011

Fabric Thickness (inch) .0125
Openness (%) 59
Light Transmission 69%
Burst Strength (psi) 92
Aperture: .0027



Description	Mesh	Wire Gauge	Size	Color
Fiberglass Insect Screen	12X12	BWG31	3'X100'	Black, grey, green, white, blue and so on.
	14X14		4'X100'	
	16X16	BWB32	1m X 25m	
	16X18		1.2m X 25m	

Typical Applications:

Fiberglass insect screen offers excellent properties of fire resistance, corrosion resistance, heat resistance, easy cleaning good ventilation, high strength, stable structure, etc. use for window screen, mosquito screen.





Paper Drywall Joint Tape >>

Introduction:

Paper Drywall Joint Tape is a widely used tape in various applications, especially to be used for wall renovation, decoration and so on.

Specifications:

Item	Unit	Standard Value
Unit Weight	g/m ²	145 ± 5
Tear Strength(Vertical/Horizontal) ≥	MN*M ² /G	40431
Thickness	mm	0.215–0.235
Sparkper Forated Strength ≥	Kpa m ² /g	1.8
Tensile Strength Dipped Water ≥	KN/m	1.2/0.7
Wet Absorb	G/m ²	35
Minimum Fiber Adhesive Force	%	50

Application:

Paper Drywall Joint Tape can be stuck to plasterboard, cement and other building materials completely and prevent against the cracks of wall and its corner. Meanwhile, it can use together with fiberglass self-adhesive mesh tape, make the building decoration and installation easier.

Packing:

Width(mm): 50

Length(m): 75, 90, 150

Each roll is wrapped in plastic bag, then 10/20 rolls to be put in one carton.



Metal Corner Tape >>

Introduction:

Metal Corner Tape is unique designed features traditional paper with two reinforcing strips of galvanized steel. The results are tough corners designed to withstand “day to day” abuse. The tape is easier to use than traditional metal corner bead. Our steel corner tape is packaged in rolls making it easier to merchandise and transport. It also saves waste, we can cut only the size we need.

Specifications:

Item	Unit	Standard Value
Unit Weight	g/m ²	150
Tensile Strength	kn/m	8

Application:

1. Reduce the corner surface wear;
2. Protect the corner from impacting;
3. Prolong the service life of the corner;
4. Help the corner keep a perfect status.

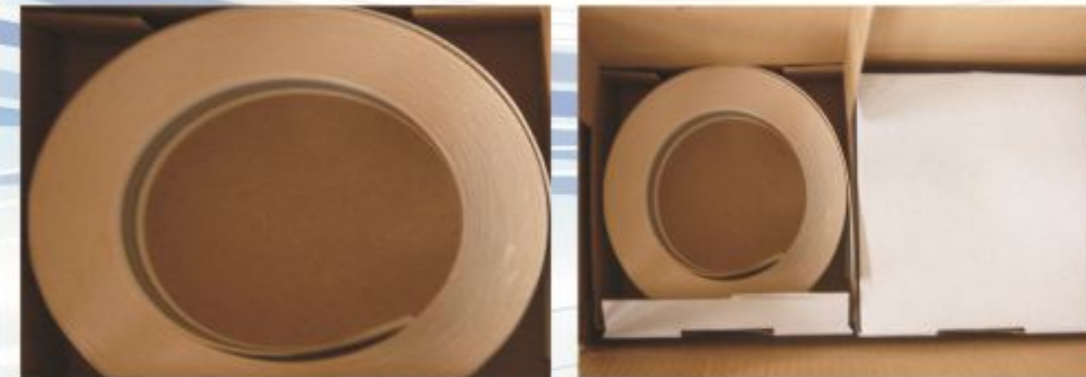
Specification:

Base material: paper tape + aluminum strip/galvanized steel

Width: 50mm

Length: 30m (standard)

Each roll is put into a paper box, then 10/20 rolls to be put in one carton.





Fiberglass Woven Roving >>

Fiberglass woven roving is one kind bidirectional fabric made by made of twist-less roving in plain weave pattern.

Application:

Fiberglass woven roving is elementary material of GRP with reinforcement, corrosion resistance and insulation. It is widely used in hand and machine production, such as boats, planes and automotive parts, furniture and sports facilities and so on.

Specifications	Properties					Texture
	Tex		Unit area mass (G/M ²)	Breaking strength (N/50mm)		
	Warp	Weft		Warp	Weft	
EWR200	200	200	200 ± 10	1300	1100	Plain
EWR300	300	300	300 ± 10	1800	1700	
EWR400	600	600	400 ± 15	2500	2200	
EWR600	1200	1200	600 ± 15	4000	3850	
EWR800	2400	2400	800 ± 30	4600	4400	
CWR180	200	200	180 ± 10	1150	1000	
CWR400	500	500	400 ± 15	2000	1900	
CWR600	1200	1200	600 ± 15	2750	2600	
CWR800	2400	2400	800 ± 30	3000	2900	



Fiberglass Chopped Strand Mat >>

Chopped strand mat is a non-woven E or C glass fiberglass fabric manufactured by spreading continuous filament rovings of 50mm in length randomly and uniformly in combination with polyester binder in power form or in emulsion form.

Specifications:

It is an excellent reinforcement material for translucent roofing panel, chemical storage tanks, FRP pipes, boat hulls and decks, truck body panel and so on.

Bond type: Powder or Emulsion

Specification (g/m ²)	Width (mm)	Area weight (g/m ²)	Moisture content	Combustible Content (%)	
				Powder (EP)	Emulsion (EE)
				CSM100g/m ²	(50~3120) ± 5
CSM120g/m ²	(50~3120) ± 5	120 ± 10%	≤ 0.20%	8.0~9.8	7.5~8.0
CSM200g/m ²	(50~3120) ± 5	200 ± 10%	≤ 0.20%	3.6~4.5	4.5~5.5
CSM225g/m ²	(50~3120) ± 5	225 ± 10%	≤ 0.20%	3.0~5.0	3.0~5.0
CSM300g/m ²	(50~3120) ± 5	300 ± 10%	≤ 0.20%	3.0~5.0	3.0~5.0
CSM375g/m ²	(50~3120) ± 5	375 ± 10%	≤ 0.20%	3.0~5.0	3.0~5.0
CSM450g/m ²	(50~3120) ± 5	450 ± 10%	≤ 0.20%	3.0~5.0	3.0~5.0
CSM600g/m ²	(50~3120) ± 5	600 ± 10%	≤ 0.20%	3.0~5.0	3.0~5.0
CSM900g/m ²	(50~3120) ± 5	900 ± 10%	≤ 0.20%	3.0~5.0	3.0~5.0





PVC Corner Bead with Fiberglass Mesh >>

PVC corner mesh has been widely used in all kinds of outdoor and indoor of building, major function is to protect the wall corner and anti-bumping, meanwhile save the cost of construction, speed up the construction process.

Specifications:

- PVC corner bead size: 21x21mmx1.15mm
- Weight: 130g/m² (standard)
- Mesh size: 4x4mm and 5x5mm
- Length: 2m, 2.5m in common
- Mesh Size Width: 100mm
- Color: white (standard), blue, green and other colors
- Package: 200 pcs per carton

We can also produce related products, such as PVC Drip Nose Beads with Fiberglass Mesh, PVC Angle Bead, Vinyl Corner Bead, PVC Stop Bead, PVC Bellcast Bead, Vinyl Drywall Bead, Vinyl Casting Bead and so on.



Fiberglass Tissue Tape >>

- Bluetex Fiberglass Tissue Tape specifications: area weight: 35g/m², 40g/m², 45g/m², 50g/m²
- Width: 50MM (standard), according to customers' requirement.
- Length: 25m-100m;
- Color: White (standard), other colors;



Fiberglass Wallcovering >>

Fiberglass wallcovering is identified as green building material, belong to grade A incombustible material.

Feature:

1. Applicable for various walls, cement, plasterboard, brick wall and so on.
2. Water resistance, corrosion resistance and excellent impact strength.
3. Excellent air permeability, no mildew.
4. The raw material is from nature, environment friendly.
5. Reinforcing the surface of wall, excellent abrasion resistance and durability.
6. Easy maintenance.



PE Tarpaulin >>

- Material: PE (inner HDPE woven fabric, LDPE laminated both sides)
- Weight: 65 g/m²-260 g/m²
- Density: 7*6, 7*7, 8*7, 8*8, 10*8, 10*10, 12*12, 14*14, 16*16
- Size: 2*3m, 3*5m, 4*6m, 5*8m, 6*8m, 6*10m and so on.
- Color: double green, double blue, double orange, blue-orange, green-silver, blue, white, red stripe and so on.



Application:

used for recreational vehicles, trucks, boats, cargo protection, construction sites, truck cover, trailer cover, equipment cover, ground cover, emergency shelter, painting tarps, trailer awning, agriculture, garden, camping etc.

Others: Logo or company information could be printed on tarpaulin.

We can provide ready-made PE tarpaulin, rolled PE tarps, semi-finished tarps and finished tarpaulin.

